



The Residences AT SOUTH HATCH

The Residences

AT SOUTH HATCH





Take life in your stride

The Residences

AT SOUTH HATCH

With 45 contemporary 1, 2 and 3 bedroom apartments, South Hatch Stables enjoys an elevated position on the edge of the Epsom Downs. Just over a mile from Epsom Racecourse, enjoy breath-taking panoramic views across the Surrey countryside and northeast towards the capital.



THE RESIDENCES

Where rustic beauty
meets design excellence



The beginning of something new

The Residences at South Hatch Stables are inspired and designed with modern day living in mind. Created by a talented team including our in-house Interior design studio, every finish, fixture and fitting has been carefully specified to suit contemporary life.







Feels like home

Take a step through the front door to reveal an interior that evokes rural charm. A harmonious blend of earthy tones and light-filled spaces effortlessly blurs the boundaries between inside and out while creating an instant sense of belonging.



Understated elegance

Your living space will be a haven, both inviting and adaptable, offering a canvas for personal expression. With clean lines and generous proportions, you're setting the stage for memorable gatherings and cherished moments with loved ones. Whether embracing classic chic or rustic charm, the atmosphere promises to be uniquely yours, brimming with warmth and inspiration.



All in good taste

Experience culinary excellence in this bespoke shaker kitchen where premium quartz work surfaces complement a selection of integrated appliances. A utility room provides a convenient extension to this practical space, with further storage solutions ensuring your home remains a haven of design and functionality.



Dreams are made of this

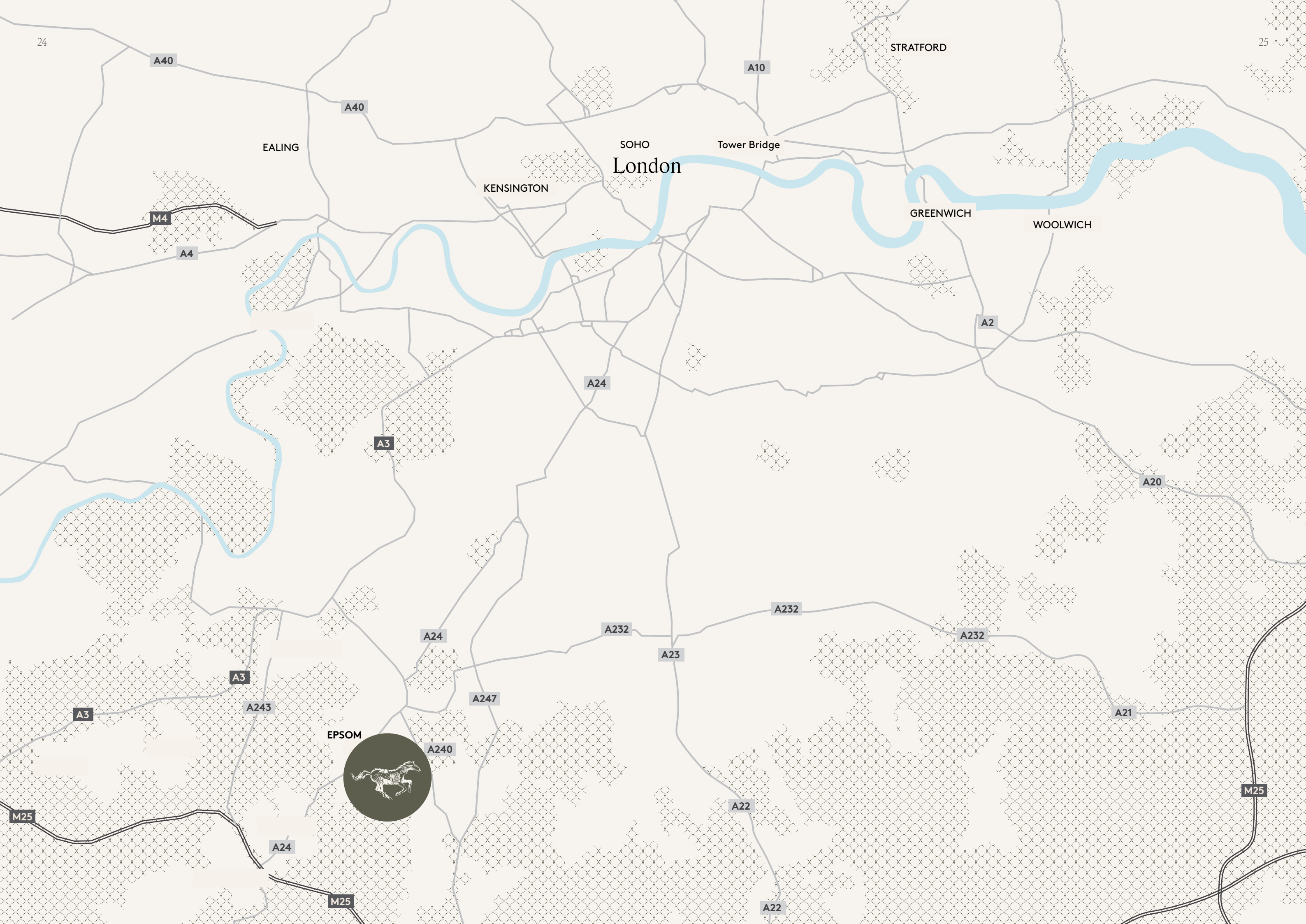
In this tranquil country setting, prioritise rest and relaxation with eco-friendly pure wool carpets bringing warmth and character with earthy tones and natural texture. Enjoy the perfect night's sleep surrounded by comfort and sustainability.



Mind, body and soul

Relax and rejuvenate in your bathroom oasis, where the Saneux sanitaryware harmonises with the warmth of English oak and natural stone look porcelain tiles. Carefully chosen matte black brassware adds a touch of contemporary contrast and designer edge, accentuating the space.





Epsom

With the 17th century discovery of a spring rich in minerals, Epsom Salts put the area firmly on the map, with Epsom becoming one of Britain's first spa towns.

Lying within the verdant Borough of Epsom and Ewell in Surrey, centuries later, past meets present as its promise of fresh air, stunning landscapes and abundance of nature has allowed this historic market town to retain a highly sought-after, get-away-from-it-all appeal.

➤ Epsom's horse racing heritage is said to have begun in the early 1700s and today the racecourse plays host to various equestrian events throughout the year including one of the world's oldest and most prestigious horse races – The Epsom Derby.





Epsom Clock Tower

To celebrate the Millennium, the Epsom and Ewell Borough Council commissioned Judy Boyt (a sculptor famous for her depiction of horses) to create an iconic sculpture to connect Epsom to the famous Derby that has been run on Epsom Downs since 1780.



"Evocation of Speed" Horse racing sculpture in Epsom Market Place



Epsom is a vibrant and community-focused town offering a delightful farmers market on the first Sunday of every month. At its heart, the town centre plaza and indoor hub provide an enticing array of restaurants and entertainment options as well as lifestyle and health services.

< Farmers market on the first Sunday of every month

*Unrivalled views of the London skyline
from the North Downs*



Connections

Easily accessible via the A3, this location provides convenient road access to London, Richmond, Wandsworth and the coast. Epsom's mainline train station and the nearby M25 motorway offer excellent connectivity for both local and long-distance travel.



Road

The A3 motorway is easily accessible for journeys to Richmond, Wandsworth or the capital. Make a quick escape to the coast with Brighton just over an hour’s drive south from home.

For those who wish to travel further afield, the M25 is approximately 4 miles away taking you to Gatwick or Heathrow in under 40 minutes or 1 hour respectively.

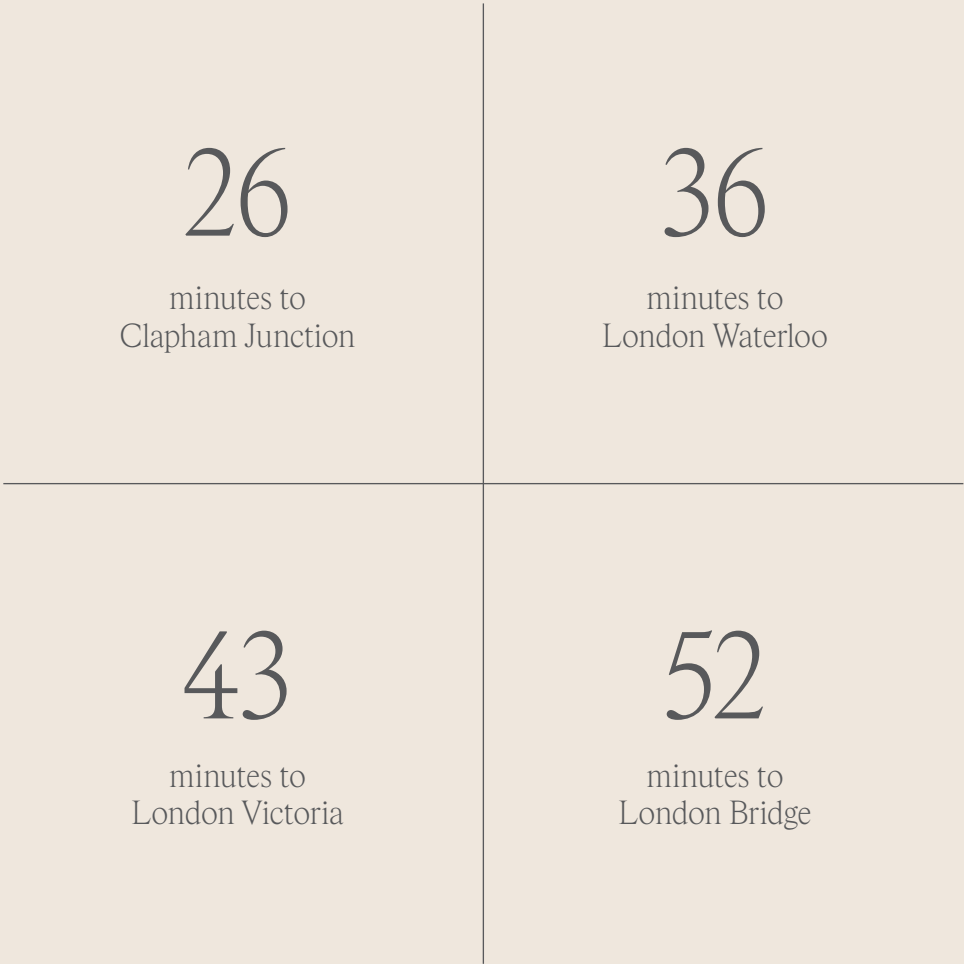


Road timings have been taken from Google Maps and are dependent on journey times and traffic. Timings are calculated from South Hatch Stables.



Rail

Epsom mainline station is just a 7-minute drive or 25-minute walk from the development. With fast and frequent services throughout the region, reach London Victoria, Waterloo or London Bridge in under an hour.



Times have been calculated from Epsom train station via Google Maps and are indicative only. Transfer times to station are not included. These are shorter train times from Epsom train station and not Epsom Downs.



Epsom Common

Epsom Common is a 438-acre nature reserve designated a Site of Special Scientific Interest (SSSI) due to its range of rare insects and its importance as a breeding site for birds.



Horton Country Park

Horton Country Park, with Local Nature Reserve status, offers a varied landscape of fields, hedgerows, ancient woodlands and ponds.

Green and pleasant land

Elizabeth Welchman Gardens

Elizabeth Welchman Gardens is one of the borough's smallest parks and provides a slightly hidden peaceful escape. Created from a former chalk pit, meander its perimeter pathway or enjoy a quiet moment spotting its many feathered inhabitants.



Rosebery Park

Former Prime Minister, keen racehorse owner and long-time Epsom resident, Lord Rosebery, gifted 12 acres of land as 'proof of his deep and abiding affection for Epsom'. His wish for it to be used as a free and open space forever was confirmed when Rosebery Park achieved QEII status during the Queen's golden jubilee celebrations in 2012.





Nonsuch Park

A 300-acre green haven in Epsom offers a serene escape with lush woodlands and open fields. This historic park, graced by the elegant Nonsuch Mansion, combines natural beauty and heritage for an active and balanced lifestyle.

A paradise for golfers

In the heart of Epsom’s beautiful landscape, you’ll find some of the region’s most prestigious golf courses, including a few notable ones just a short drive away from your residence:



Epsom Golf Club
The Club’s panoramic 18 hole course on top of the Downs offers a unique and intriguing challenge to golfers of all abilities,

- 0.9 miles
- Club was founded in 1889.
- Architect: J Hatchard-Smith

Royal Automobile Club,
Woodcote Park Country Club
With two exceptional downland golf courses in the beautiful surroundings of the Epsom Downs, Woodcote Park offers members and their guests the perfect golfing experience.

- 2.4 miles
- Club was founded in 1897.
- Architect: Herbert Fowler
- Restricted to members and their guests.

You will also have the opportunity to discover other exclusive golf clubs in the vicinity, where membership either requires acquaintance with a current member or meeting specific criteria for admission.



Banstead Downs Golf Club
Burden Lane
Sutton
SM2 7DD


Renowned as one of the UK’s finest downland courses offering year-round playability and a challenging natural terrain.

- Distance: 3.4 miles
- Course Inaugurated: 1890
- Architect: J H Taylor
James Braid, Fred G Hawtree

Walton Heath Golf Club
Walton on the Hill
Tadworth
KT20 7TP
Known for its exceptional heathland layouts, both courses rank among the UK and Ireland’s top 50, with the old course also gracing the world’s top 100.

- Distance: 3.9 miles
- Established: 1903
- Courses: Walton Heath Old & Walton Heath New
- Architect: Herbert Fowler





*Of all the courses surrounding London
there are few with as much history and
honour as the wonderfully pure heathland
layout of Walton Heath.*

A touch of self-indulgence

Whether dining inside or out, enjoy superb culinary offerings and an up-close view of the racecourse at Rubbing House. Just one of a series of Grumpy Mole Country Inns, from à la carte to afternoon tea, snacks to Sunday roasts, the Epsom establishment provides a range of menus for every taste and occasion. Enjoy bold Thai flavours in vibrant, informal surroundings at Giggling Squid.

If in search of something slightly less formal, indulge in a superb selection of seasonal dishes, wines, real ales and lagers at The Derby Arms. The cool, quirky and decidedly laid back Caballo Lounge offers brunch and burgers to blueberry shortcake sundae and caters well for vegan, vegetarian and those with allergies. The multi-award-winning Epsom Social Food Hall celebrates the very best of London and Surrey's street food scene.



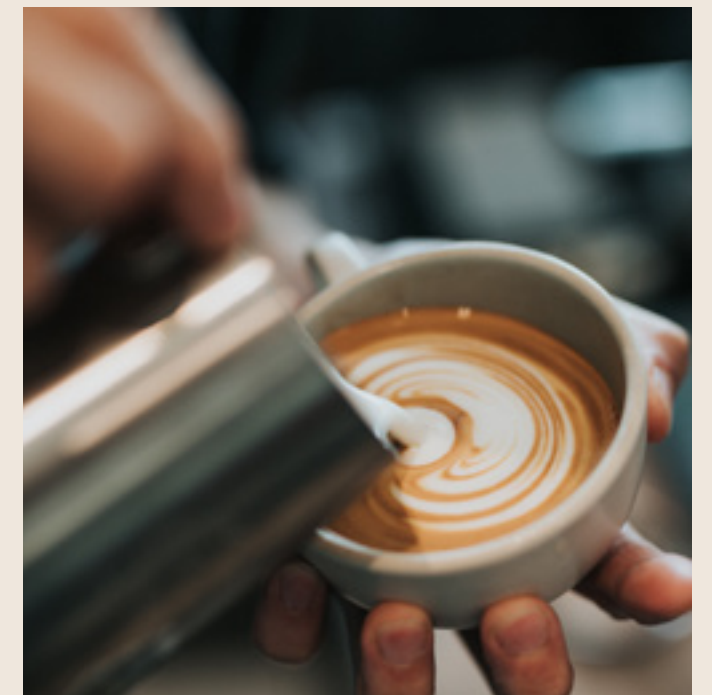
< Food enthusiasts will soon find themselves spoiled for choice – an incredible world of flavour awaits.



Epsom and its environs offer an eclectic mix of cafés, bars and restaurants.

The Ashley Centre offers 50 high street and independent retailers in the heart of Epsom. With M&S, Waitrose, Boots, Hotel Chocolat, Next and Pret a Manger, your fashion, food and health and beauty needs will be more than met. The addition of Gail's Bakery will ensure temptation is always well-rewarded with freshly baked artisan breads, pastries, cakes, scones and sandwiches.

Travel just a few miles to Sutton, Guildford or Kingston upon Thames for further shopping opportunities.



A touch of retail therapy



Gail's bakes fresh, handmade bread, pastries and cakes every day, served with their carefully sourced house blend speciality coffee. >



A class of its own

For those with children of school age, choose from a wide range of education establishments rated 'good', 'excellent' or 'outstanding' including The Vale Primary School, St Christopher's School & Nursery, Rosebery School, City of London Freeman's School, Kingswood House, Epsom College and St John's School.



Nursery, Pre-school, Junior and Primary

Bright Horizons Epsom Waltham House Day Nursery and Preschool 28 Worple Road, Epsom, Surrey, KT18 5EH	1.1 miles
Club Vale Limited St Martins C of E Junior School, Ashley Road, Epsom, KT18 7AD	1.1 miles
Fennies Nursery 1A, Epsom, Surrey, KT19 8TH	2 miles
Cherry Field Nursery Long Grove Park, Long Grove Road, Epsom, Surrey, KT19 8TF	2.8 miles
Cherry Field Nursery Long Grove Park, Long Grove Road, Epsom, Surrey, KT19 8TF	2.8 miles
Danetree Primary School Danetree Road, West Ewell, Epsom, KT19 9SE	3.1 miles
Barnett Wood Infant & Pre-School Barnett Wood Lane, Ashtead, KT21 2DF	3.8 miles
Flying Start Day Nursery Moorlands The Marld, Ashtead, Surrey, KT21 1RW	3.9 miles



Independent

St Christopher's School and Nursery Epsom, 6 Downs Rd, Epsom KT18 5HE	0.4 miles
Epsom College College Rd, Epsom KT17 4JQ Boarding & Day (Secondary & Sixth Form)	1.2 miles
Downsend Pre-Prep School Epsom 6 Norman Ave, Epsom KT17 3AB	1.4 miles
Kingswood House School, 56 West Hill, Epsom KT19 8LG Lower Prep (Reception - Year 4, Years 5-8, Years 9-11)	1.9 miles
Ewell Castle School, Church St, Ewell, Epsom KT17 UK Nursery & Reception, Prep School, Senior School & Sixth Form	2.4 miles
St John's School Epsom Road Leatherhead, Surrey KT22 8SP	4.9 miles

Secondary and Sixth Form

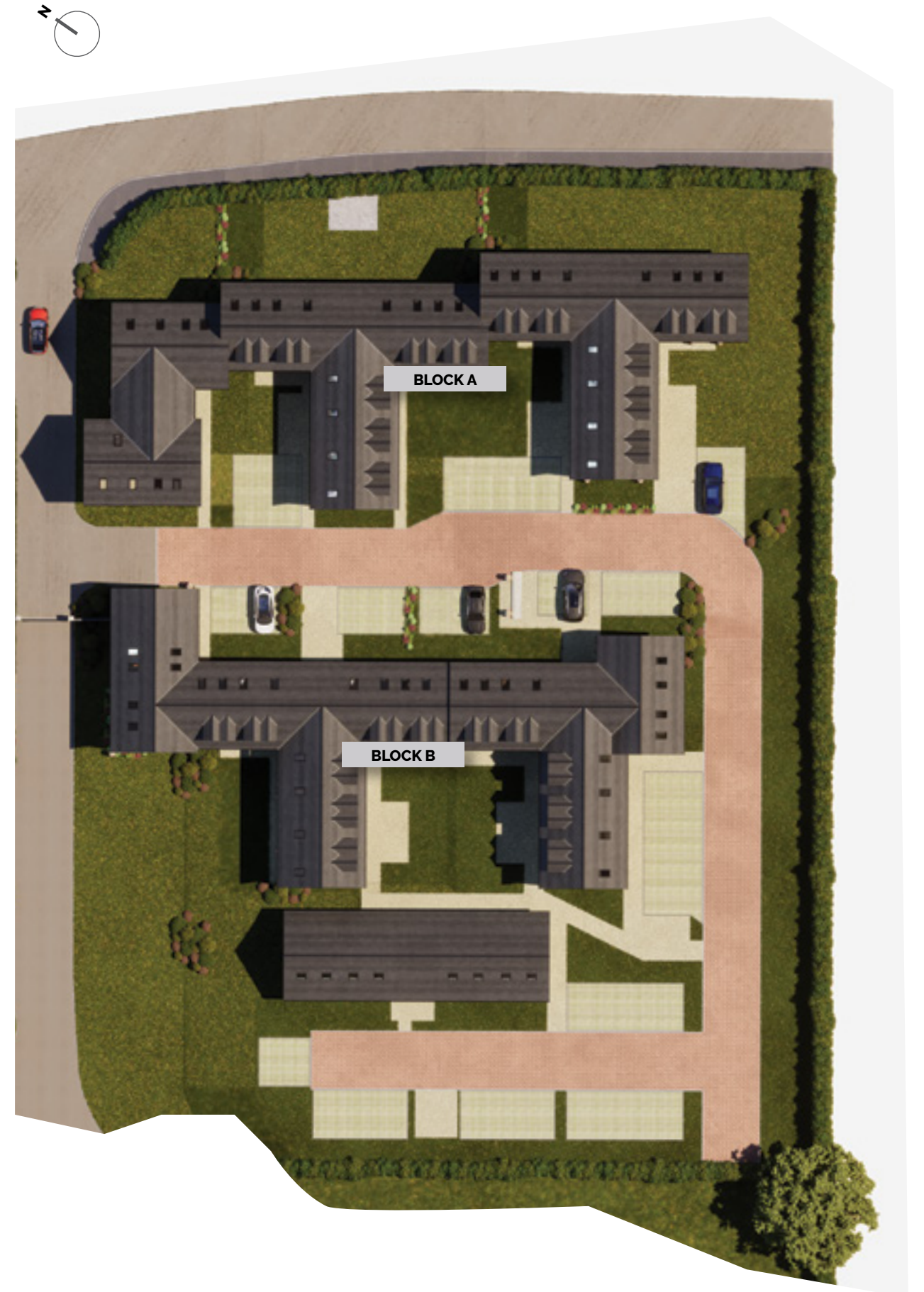
Rosebery School (All Girls), White Horse Dr, Epsom KT18 7NQ	2.1 miles
Glyn School (All boys) The Kingsway, Ewell, Epsom, KT17 1NB	2.2 miles

*Shortest distances have been calculated via Google Maps and are based on journey from South Hatch Stables.



An elevated position on the edge of the Epsom Downs

Nestled amid lush greenery and serene woodland, The Residences at South Hatch Stables provide a secluded escape where privacy and tranquillity abound. Enhanced by the nearby stable and equestrian ring, this distinctive and unique setting promises endless rustic charm and irresistible allure.



Specification

When it comes to your new surroundings, rest assured that exceptional attention has been given to every single detail both inside and out.





Specification



Electrical

- Internal lift to all floors
- Broadband connections to all properties
- White LED downlights in the open plan kitchen, utility and cloakroom
- External lights to the ground floor private gardens
- Matt black switches and sockets in all rooms
- External power point to the rear of the house
- TV points (high & low level position)

Bathroom & En Suite

- White Nuie sanitaryware
- Bespoke wall-hung vanity units with integrated storage to the basin in the Bathroom and Bedroom En-Suite
- Matt Black JTP brassware
- Black framed glass shower doors and screens
- Porcelain tiling to walls and floors
- Shaver point in the Bathroom and En Suite

Kitchen

- Dovetail Bespoke Shaker Kitchens
- Quartz work surfaces with matching splashback
- 1½ bowl stainless steel sink with drainer and black mixer tap
- Bosch single oven
- Bosch 4-burner induction hob
- Bosch black metal extractor hood
- Hoover integrated dishwasher
- Hoover integrated fridge/freezer
- Karndean luxury vinyl flooring

Utility Room

- Dovetail Bespoke Shaker Utility Room
- Quartz work surfaces with matching splashback
- Space for free standing washing/dryer
- Karndean luxury vinyl flooring



Environmental, Plumbing & Heating

- Ground source heat pumps for hot water and heating
- Double glazed windows providing a high level of thermal insulation and reduced heat loss
- Dual flush mechanisms to toilets to reduce water use
- Insulation within roof spaces and external wall cavities to limit heat loss in the winter and reduce heat gain in the summer
- Low energy lighting throughout
- Provision for electric car charging points to each flat's allocated parking space

Plumbing & Heating

- Ground source heat pump-generated heating and hot water
- Flats heated by high efficiency radiators

Communal Areas

- Mandarin Stone flagstone-look porcelain flooring to ground floor
- Communal letterboxes in lobby areas

Internal Finishes

- Smooth ceilings finished in white paint
- All walls finished in Dulux paint
- All woodwork finished in Dulux paint (satinwood)
- Karndean luxury vinyl flooring to Hall, Kitchen, Utility Room and Living/Dining

External Finishes

- Stone paths and patio areas to ground floor flats
- Turf to the communal gardens
- External garden tap
- External lighting to the private roads
- Flat intercom system and door release

Doors & Windows

- Aluminium windows
- Aluminium sliding doors leading out to the private patios on ground floor
- Internal cottage style solid timber doors in painted finish with knurled matt black ironmongery
- Solid oak front doors with matt black ironmongery
- Roof lights and dormer windows in top floor apartments

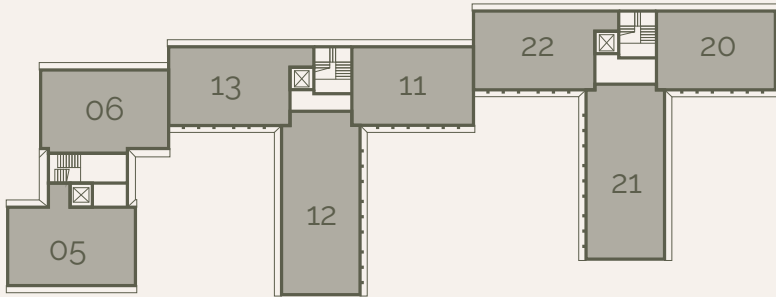




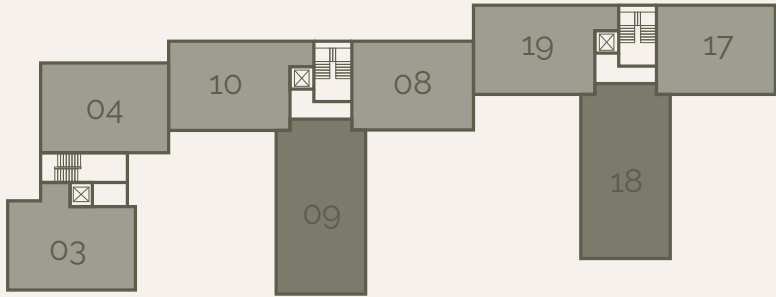


The Residences at South Hatch
Block A

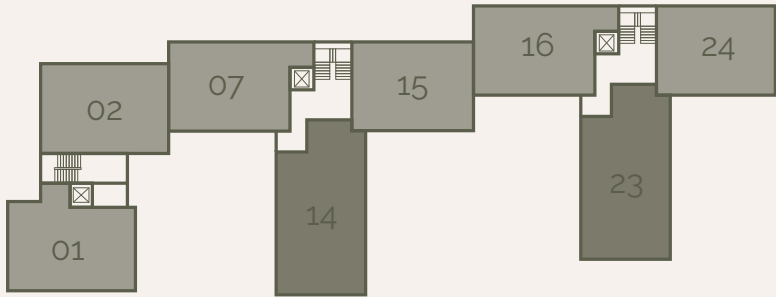
Second Floor



First Floor

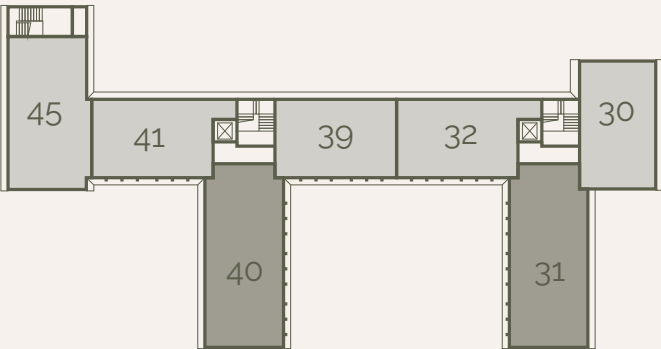


Ground Floor

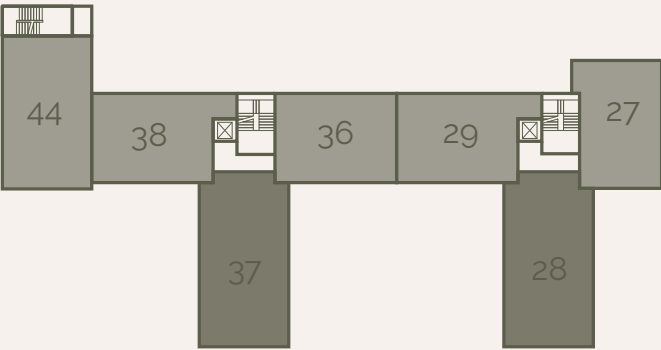


The Residences at South Hatch
Block B

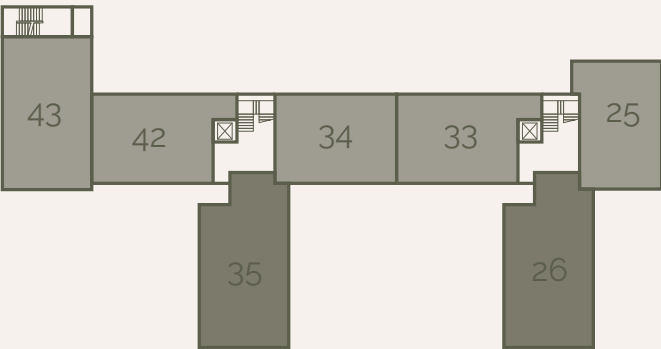
Second Floor



First Floor



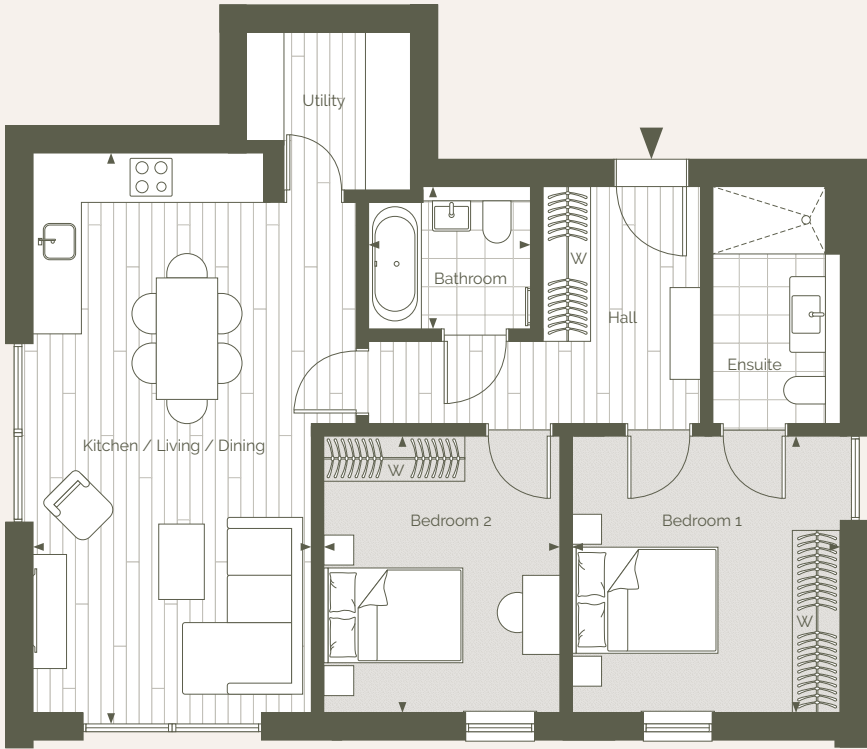
Ground Floor



Block A
Apartment 01

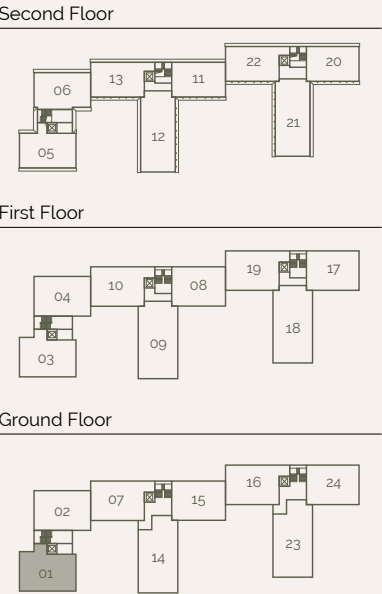
Two Bedrooms
Ground Floor

Total Area: 78.5 sq m 845 sq ft



Room Dimensions		
Kitchen / Living / Dining	3.70m x 7.60m	12' 2" x 24' 11"
Bedroom 1	3.60m x 3.70m	11' 10" x 12' 2"
Bedroom 2	3.10m x 3.70m	10' 2" x 12' 2"
Bathroom	2.10m x 1.90m	6' 11" x 6' 3"

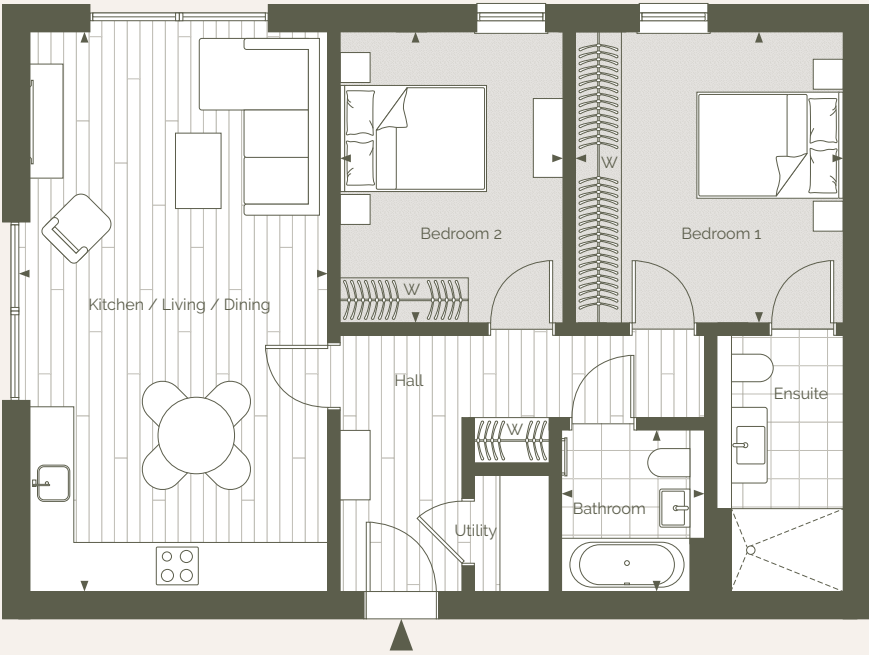
Block A Key Plans



Block A
Apartment 02

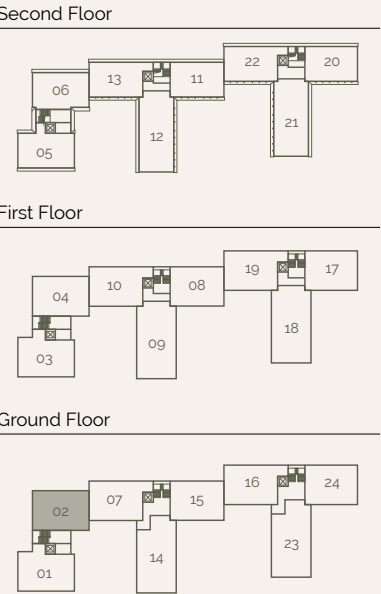
Two Bedrooms
Ground Floor

Total Area: 78.7 sq m 847 sq ft



Room Dimensions		
Kitchen / Living / Dining	4.10m x 7.40m	13' 5" x 24' 3"
Bedroom 1	3.60m x 3.90m	11' 10" x 12' 10"
Bedroom 2	3.00m x 3.90m	9' 10" x 12' 10"
Bathroom	1.90m x 2.10m	6' 3" x 6' 11"

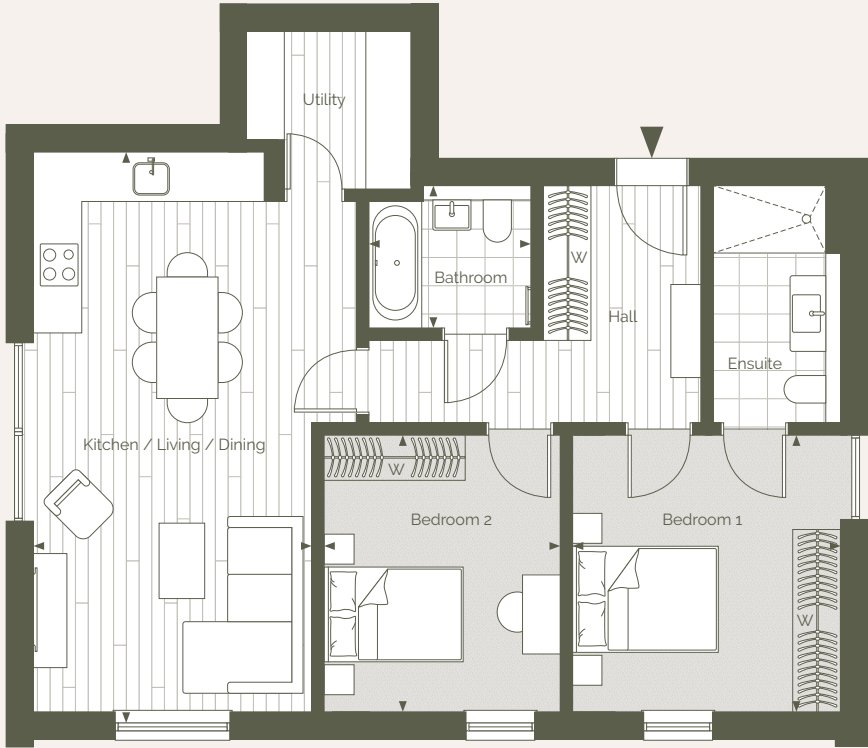
Block A Key Plans



Block A
Apartment 03

Two Bedrooms
First Floor

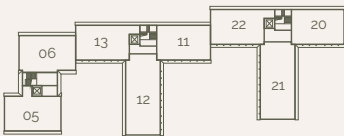
Total Area: 78.5 sq m 845 sq ft



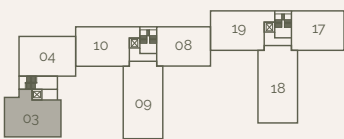
Room Dimensions		
Kitchen / Living / Dining	3.70m x 7.60m	12' 2" x 24' 11"
Bedroom 1	3.60m x 3.70m	11' 10" x 12' 2"
Bedroom 2	3.10m x 3.70m	10' 2" x 12' 2"
Bathroom	2.10m x 1.90m	6' 11" x 6' 3"

Block A Key Plans

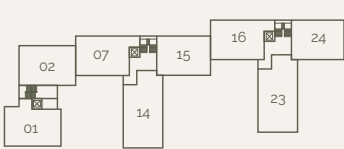
Second Floor



First Floor



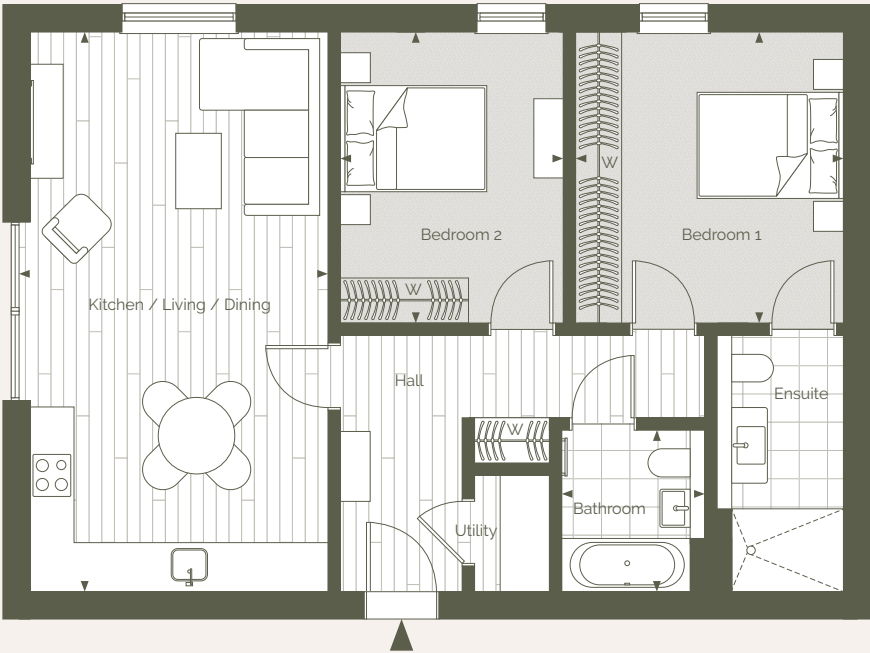
Ground Floor



Block A
Apartment 04

Two Bedrooms
First Floor

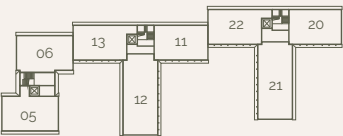
Total Area: 78.7 sq m 847 sq ft



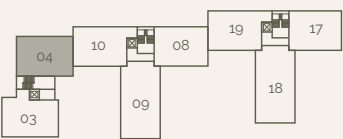
Room Dimensions		
Kitchen / Living / Dining	4.10m x 7.40m	13' 5" x 24' 3"
Bedroom 1	3.60m x 3.90m	11' 10" x 12' 10"
Bedroom 2	3.00m x 3.90m	9' 10" x 12' 10"
Bathroom	1.90m x 2.10m	6' 3" x 6' 11"

Block A Key Plans

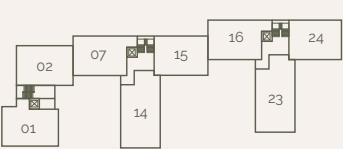
Second Floor



First Floor



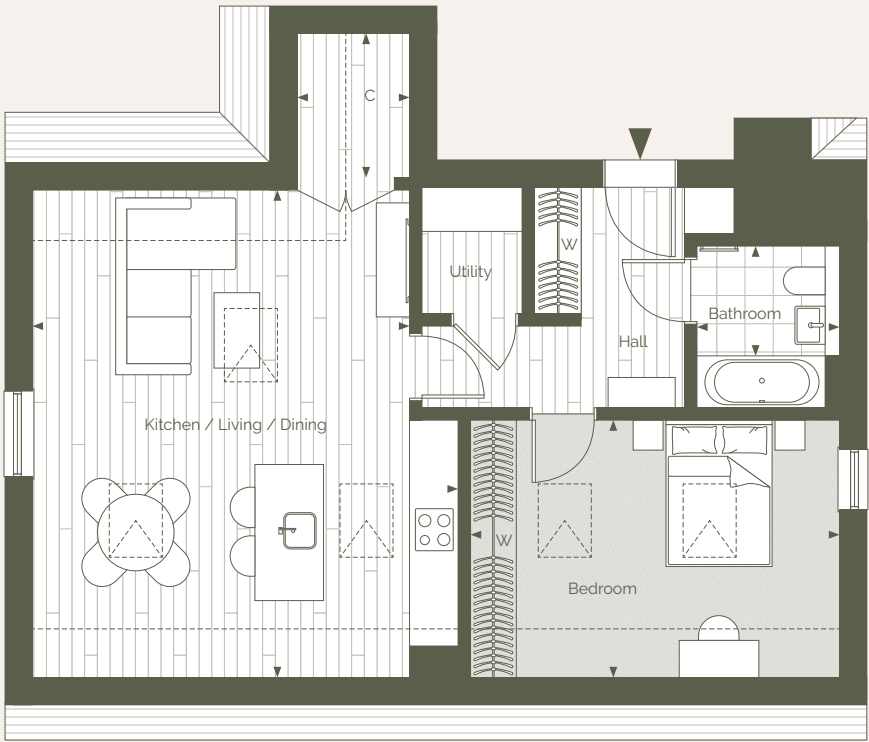
Ground Floor



Block A
Apartment 05

One Bedroom
Second Floor

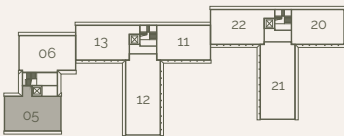
Total Area: 58.4 sq m 629 sq ft



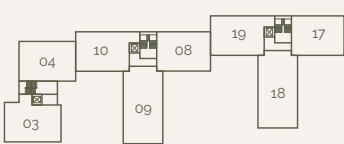
Room Dimensions		
Kitchen / Living / Dining	5.00m x 6.50m	16' 5" x 21' 4"
Bedroom	4.90m x 3.40m	16' 1" x 11' 2"
Bathroom	1.90m x 1.50m	6' 3" x 4' 11"

Block A Key Plans

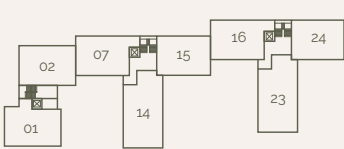
Second Floor



First Floor

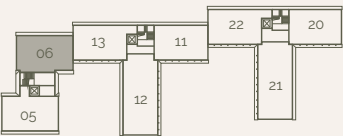


Ground Floor

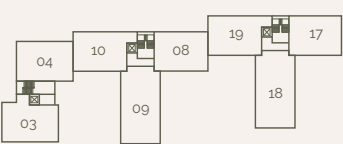


Block A Key Plans

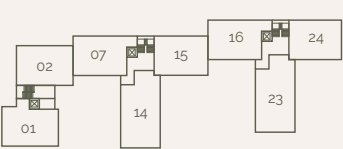
Second Floor



First Floor



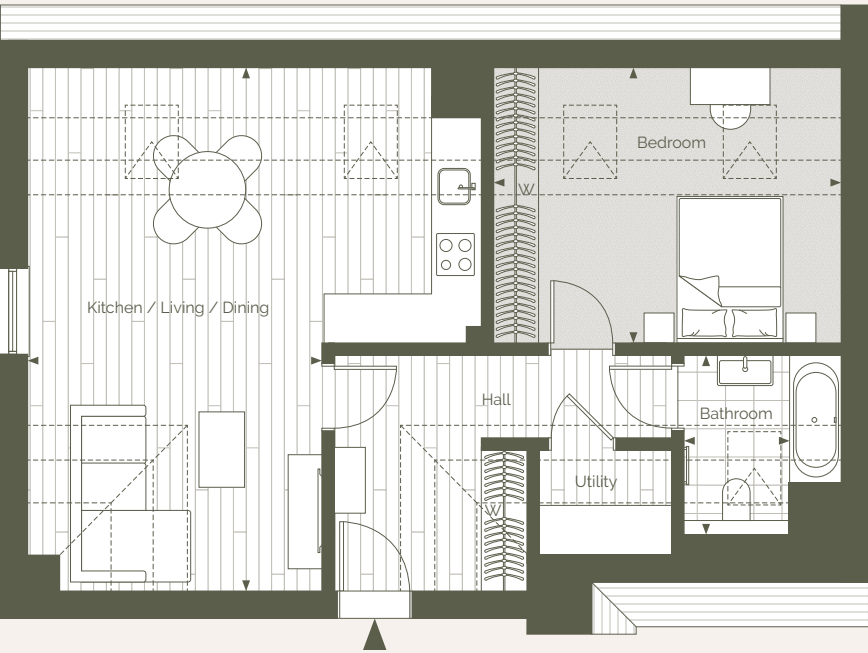
Ground Floor



Block A
Apartment 06

One Bedroom
Second Floor

Total Area: 59.2 sq m 637 sq ft

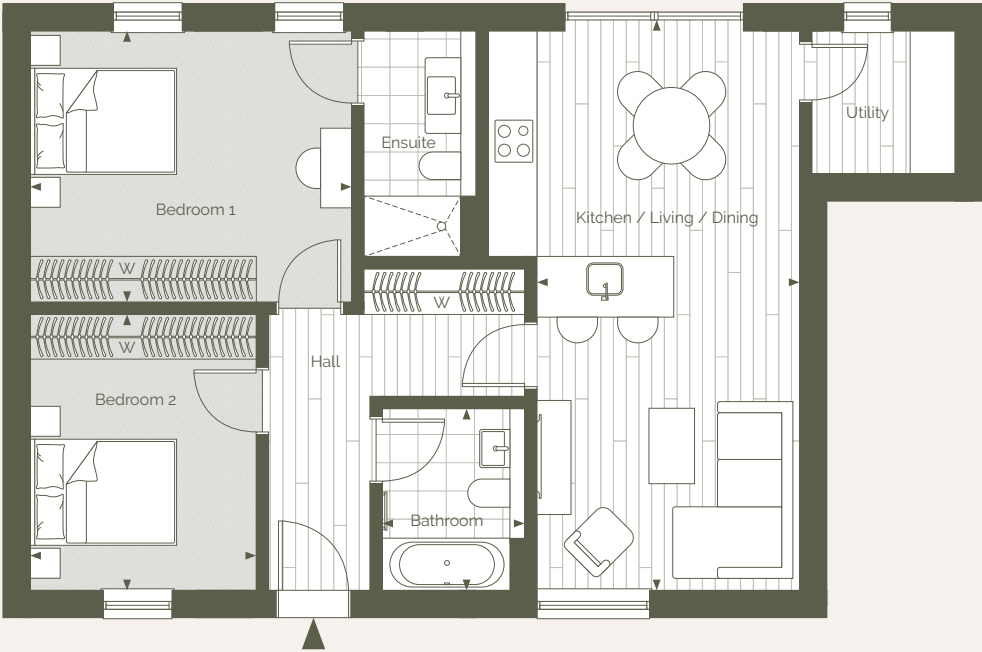


Room Dimensions		
Kitchen / Living / Dining	3.99m x 6.95m	13' 1" x 22' 10"
Bedroom	4.60m x 3.70m	15' 1" x 12' 2"
Bathroom	1.40m x 2.40m	4' 7" x 7' 10"

Block A & B
Apartments 07, 16, 33 & *42

Two Bedrooms
Ground Floor

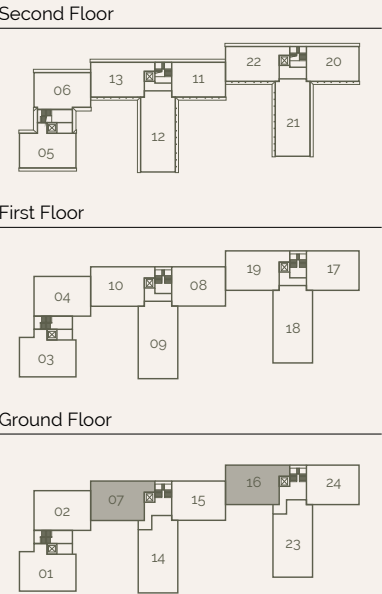
Total Area: 77.7 sq m 837 sq ft



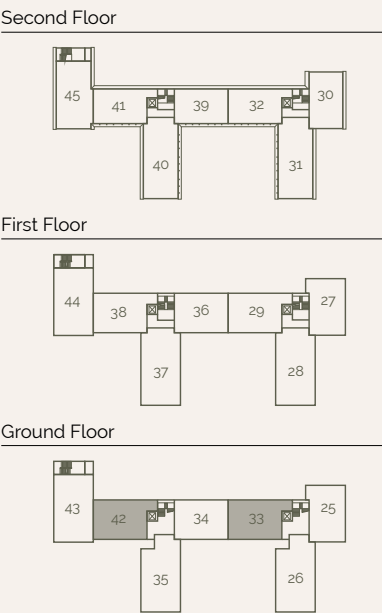
Room Dimensions		
Kitchen / Living / Dining	3.50m x 4.60m	11' 6" x 15' 1"
Bedroom 1	4.30m x 3.60m	14' 1" x 11' 10"
Bedroom 2	3.00m x 3.70m	9' 10" x 12' 2"
Bathroom	1.90m x 2.40m	6' 3" x 7' 10"

*Apartment 42 has a different Private Amenity layout

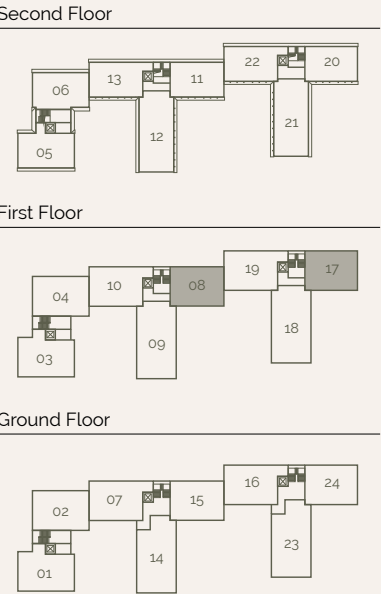
Block A Key Plans



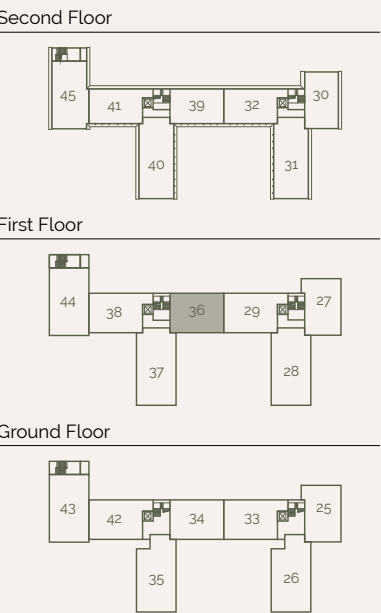
Block B Key Plans



Block A Key Plans



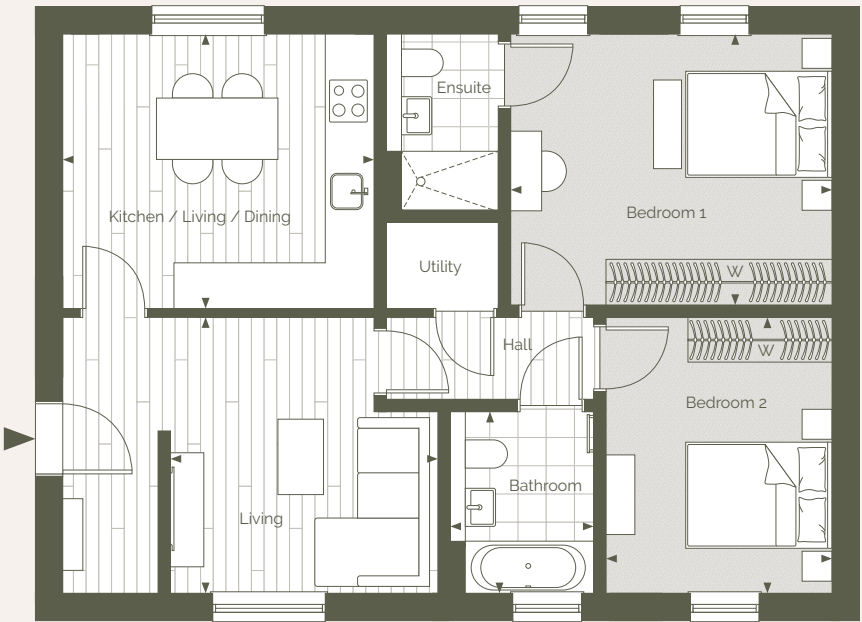
Block B Key Plans



Block A & B
Apartments 08, 17 & 36

Two Bedrooms
First Floor

Total Area: 73.6 sq m 793 sq ft



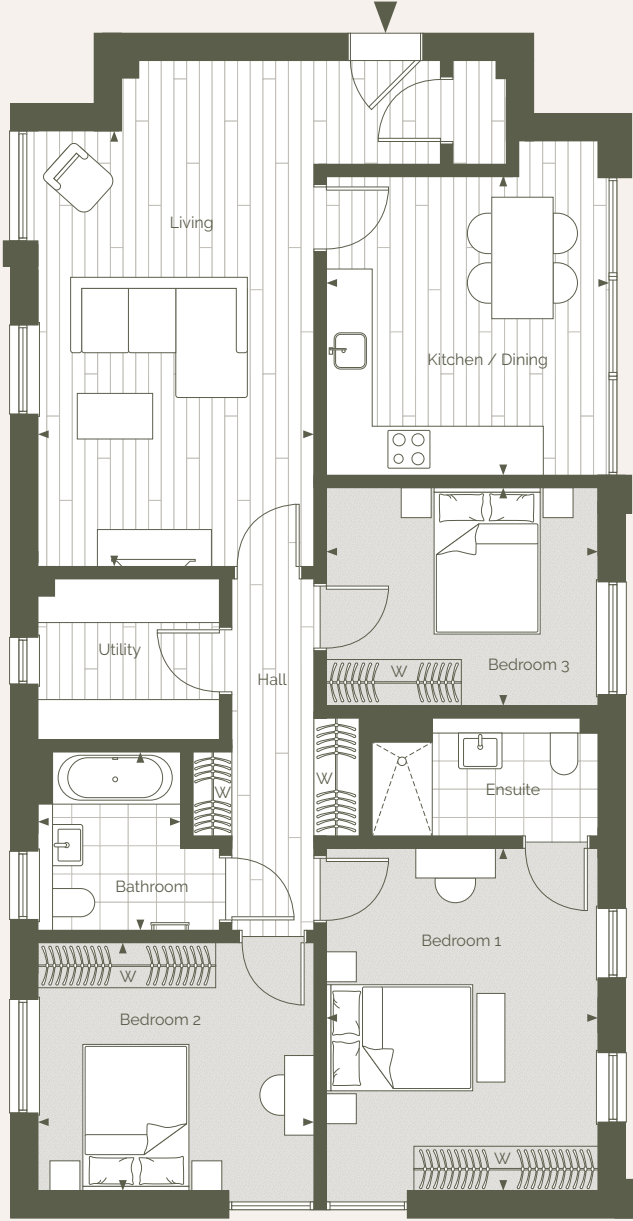
Room Dimensions		
Kitchen / Dining	4.13m x 3.65m	13' 7" x 11' 11"
Living	3.67m x 3.66m	12' 0" x 12' 0"
Bedroom 1	4.30m x 3.60m	14' 1" x 11' 10"
Bedroom 2	3.00m x 3.70m	9' 10" x 12' 2"
Bathroom	1.90m x 2.40m	6' 3" x 7' 10"

Blocks A & B

Apartments 09, 18, 28 & 37

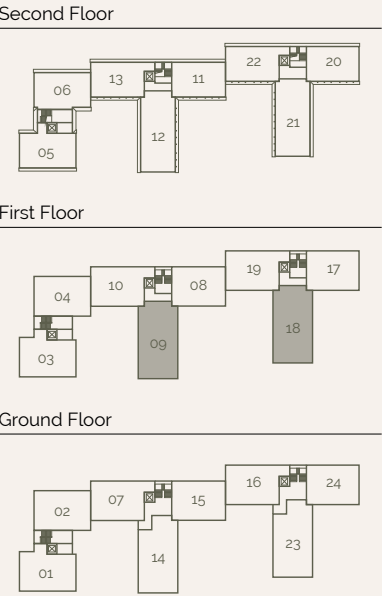
Three Bedrooms
First Floor

Total Area: 100.2 sq m 1,078 sq ft

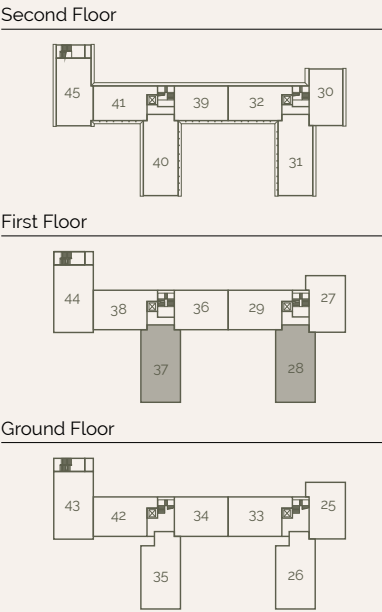


Room Dimensions		
Kitchen / Dining	3.74m x 3.92m	12' 3" x 12' 10"
Living	3.57m x 5.76m	11' 9" x 18' 11"
Bedroom 1	3.60m x 4.60m	11' 10" x 15' 1"
Bedroom 2	3.70m x 3.30m	12' 2" x 10' 10"
Bedroom 3	3.58m x 3.01m	11' 9" x 9' 11"
Bathroom	1.90m x 3.00m	6' 3" x 9' 10"

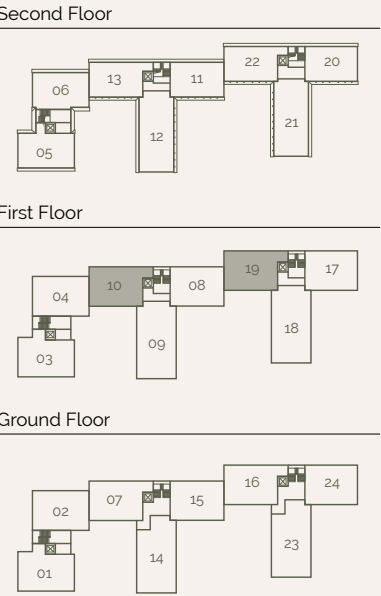
Block A Key Plans



Block B Key Plans



Block A Key Plans

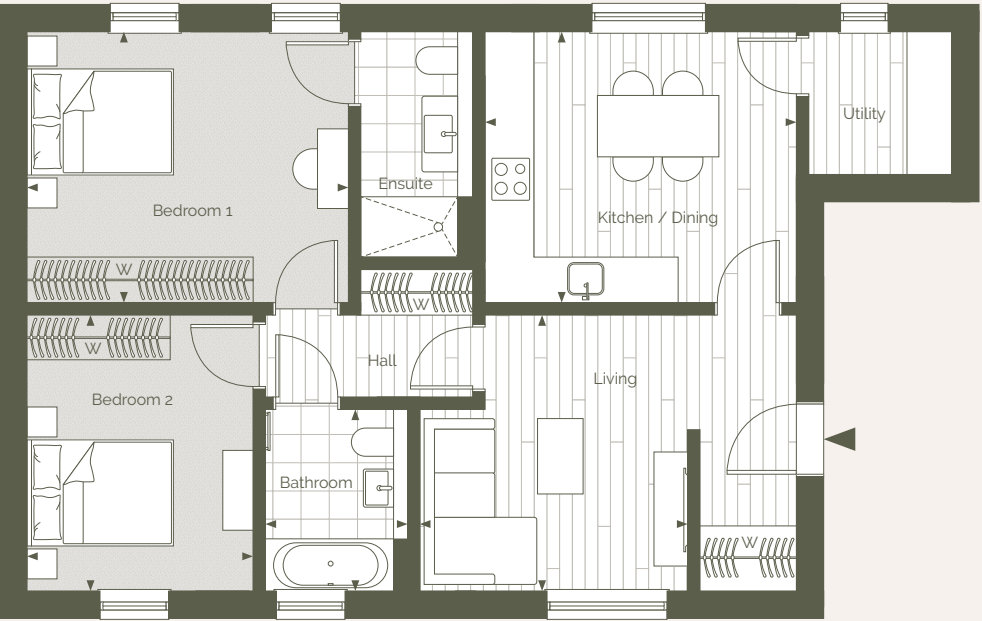


Blocks A & B

Apartments 10, 19, 29 & 38

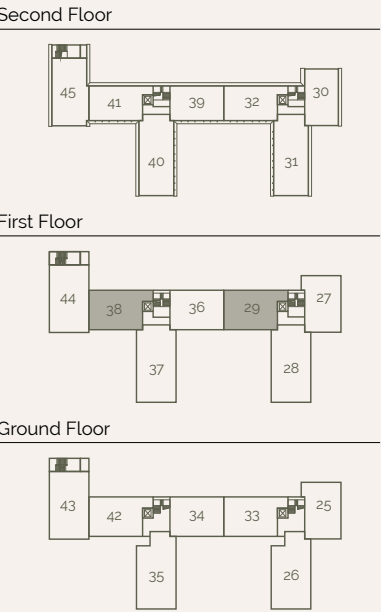
Two Bedrooms
First Floor

Total Area: 77.7 sq m 837 sq ft



Room Dimensions		
Kitchen / Dining	4.04m x 3.65m	13' 3" x 11' 11"
Living	3.68m x 3.66m	12' 1" x 12' 0"
Bedroom 1	4.30m x 3.60m	14' 1" x 11' 10"
Bedroom 2	3.00m x 3.70m	9' 10" x 12' 2"
Bathroom	1.90m x 2.40m	6' 3" x 7' 10"

Block B Key Plans

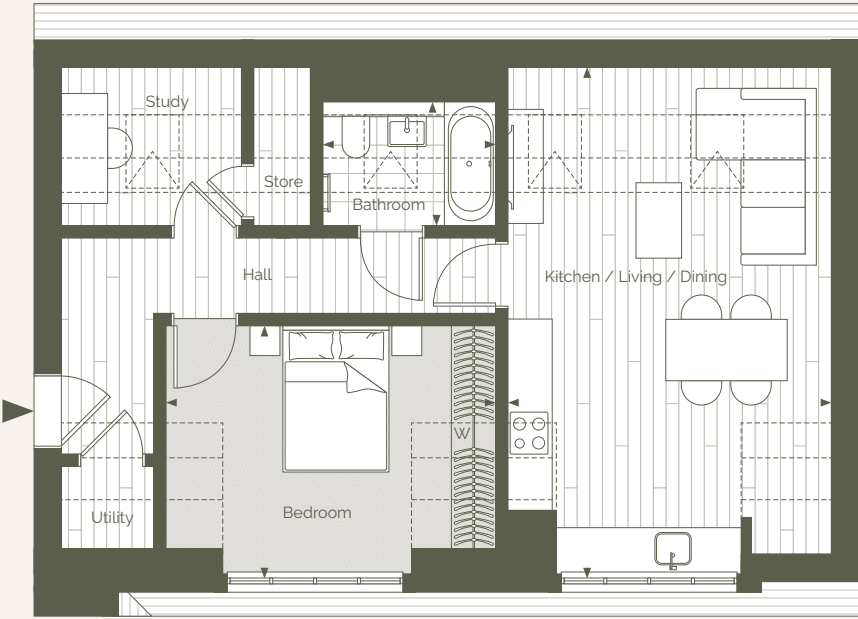


Blocks A & B

Apartments 11, 20 & 39

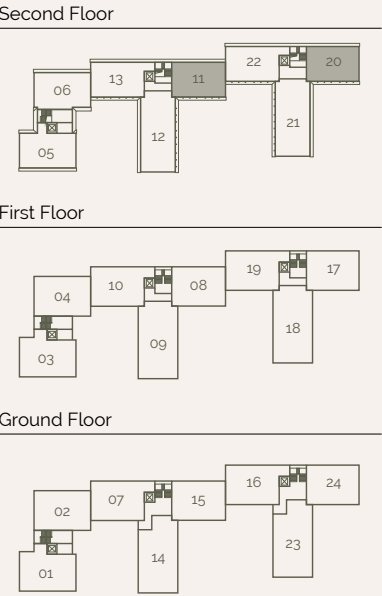
One Bedrooms
Second Floor

Total Area: 55.1 sq m 593 sq ft



Room Dimensions		
Kitchen / Living / Dining	4.36m x 5.83m	14' 4" x 19' 2"
Bedroom	4.40m x 3.34m	14' 5" x 10' 11"
Bathroom	2.34m x 1.72m	7' 8" x 5' 8"

Block A Key Plans



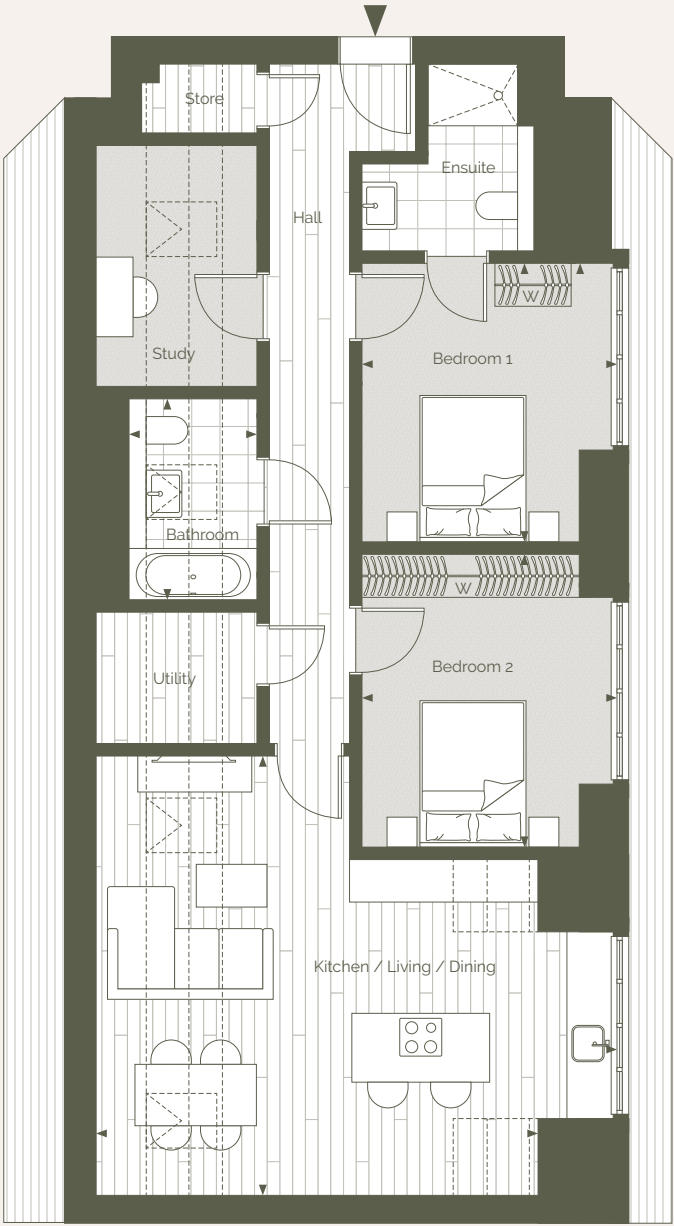
Blocks A & B

Apartments 12, 21*, 31* & 40

Two Bedrooms
Second Floor

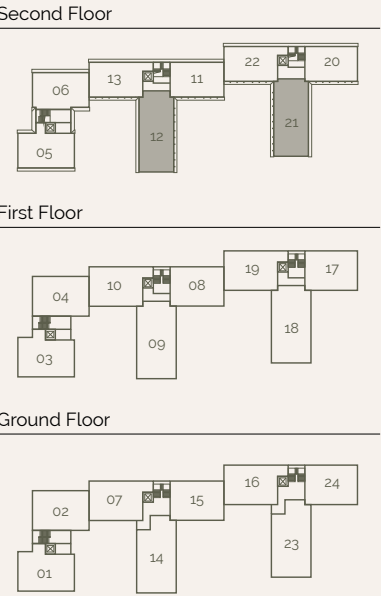
*Apartments 21 and 31 are handed

Total Area: 82.2 sq m 885 sq ft

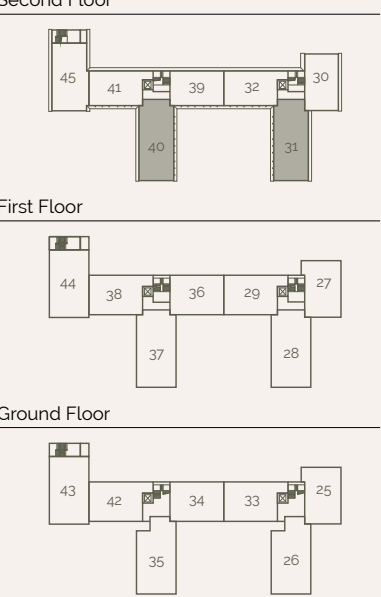


Room Dimensions		
Kitchen / Living / Dining	5.80m x 5.81m	19' 0" x 19' 1"
Bedroom 1	3.36m x 3.69m	11' 0" x 12' 1"
Bedroom 2	3.36m x 3.92m	11' 0" x 12' 10"
Bathroom	1.73m x 2.7m	5' 7" x 8' 9"

Block A Key Plans



Block B Key Plans

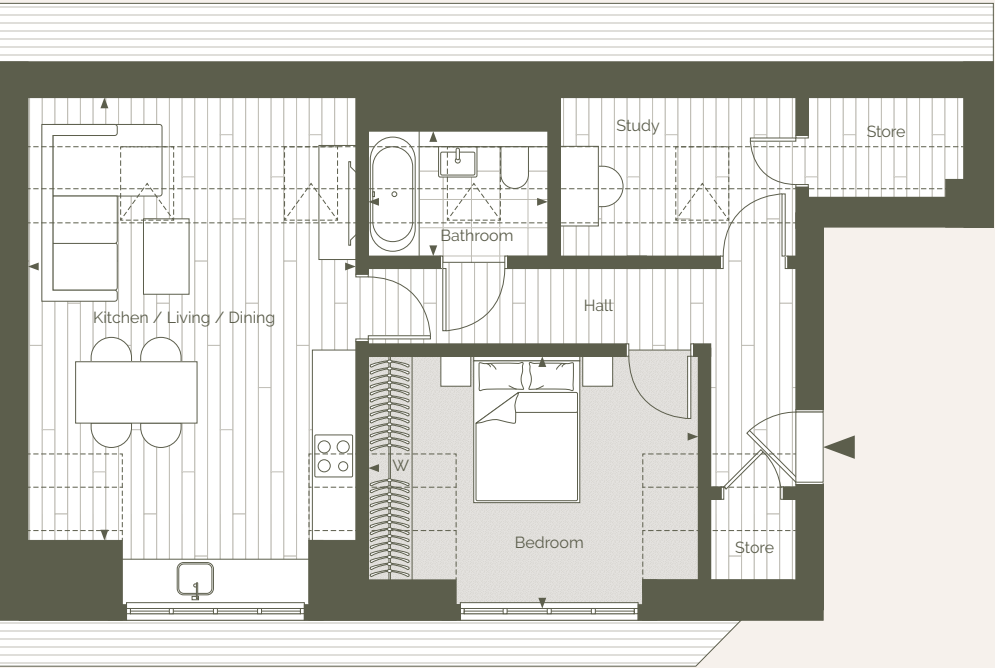


Blocks A & B

Apartments 13, 22, 32 & 41

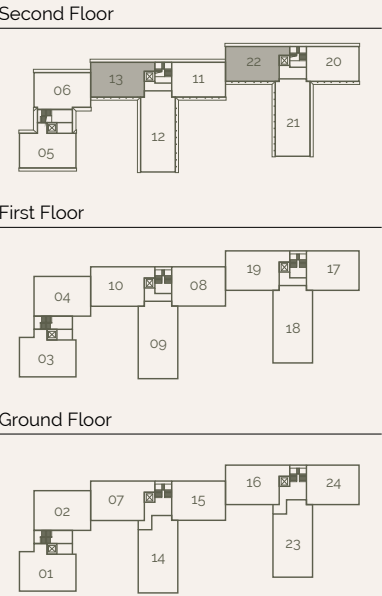
One Bedroom
Second Floor

Total Area: 56.6 sq m 609 sq ft

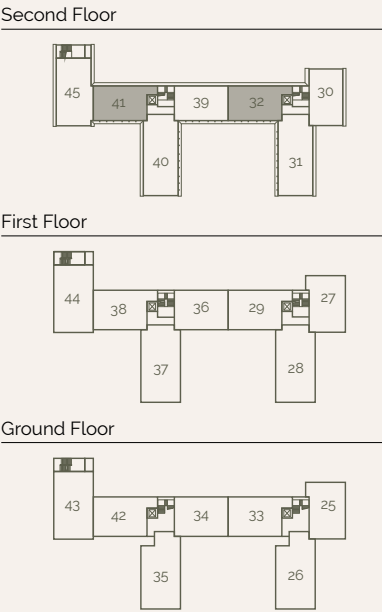


Room Dimensions		
Kitchen / Living / Dining	4.36m x 5.83m	14' 4" x 19' 2"
Bedroom	4.41m x 3.34m	14' 6" x 10' 11"
Bathroom	2.45m x 1.72m	8' 0" x 5' 8"

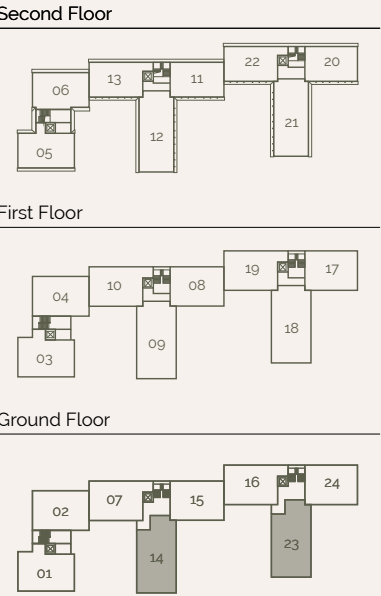
Block A Key Plans



Block B Key Plans



Block A Key Plans



Blocks A & B

Apartments 14, 23, 26 & 35

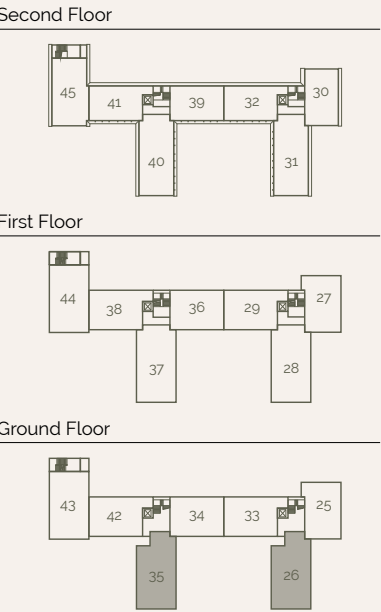
Three Bedrooms
Ground Floor

Total Area: 100.2 sq m 1,078 sq ft



Room Dimensions		
Kitchen	2.43m x 3.97m	7' 11" x 13' 0"
Living / Dining	4.89m x 5.13m	16' 1" x 16' 10"
Bedroom 1	3.58m x 4.59m	11' 9" x 15' 1"
Bedroom 2	3.58m x 3.26m	11' 9" x 10' 8"
Bathroom	2.43m x 2.42m	7' 12" x 7' 11"

Block B Key Plans

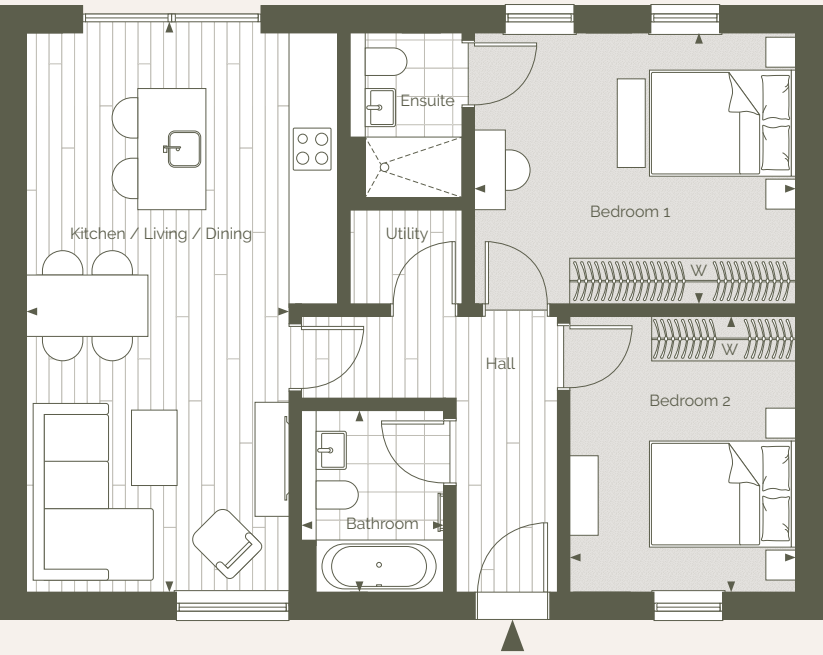


Blocks A & B

Apartments 15, 24 & 34

Two Bedroom
Ground Floor

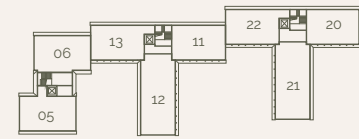
Total Area: 73.6 sq m 793 sq ft



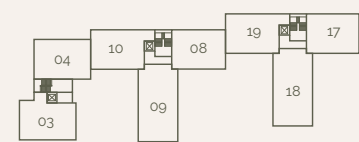
Room Dimensions		
Kitchen / Living / Dining	3.50m x 7.60m	11' 6" x 24' 11"
Bedroom 1	4.30m x 3.60m	14' 1" x 11' 10"
Bedroom 2	3.00m x 3.70m	9' 10" x 12' 2"
Bathroom	1.90m x 2.40m	6' 3" x 7' 10"

Block A Key Plans

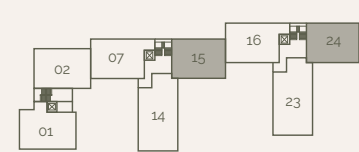
Second Floor



First Floor

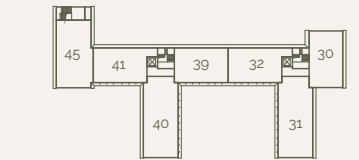


Ground Floor

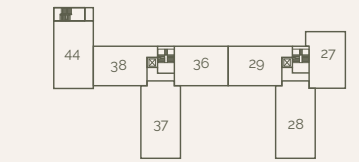


Block B Key Plans

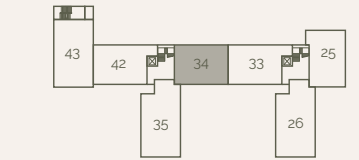
Second Floor



First Floor



Ground Floor

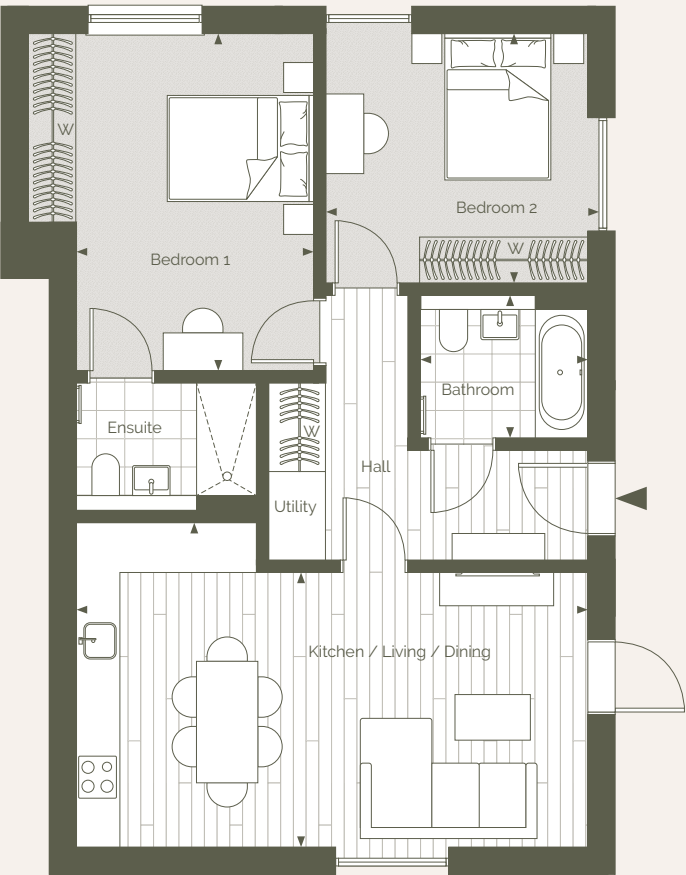


Block B

Apartment 25

Two Bedrooms
Ground Floor

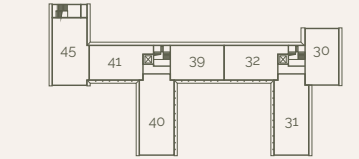
Total Area: 73.6 sq m 792 sq ft



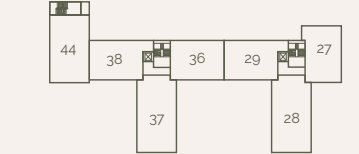
Room Dimensions		
Kitchen / Living / Dining	6.80m x 3.60m	22' 4" x 11' 10"
Bedroom 1	3.20m x 4.50m	10' 6" x 14' 9"
Bedroom 2	3.60m x 3.30m	11' 10" x 10' 10"
Bathroom	2.20m x 1.90m	7' 3" x 6' 3"

Block B Key Plans

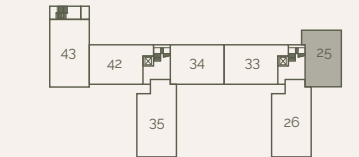
Second Floor



First Floor



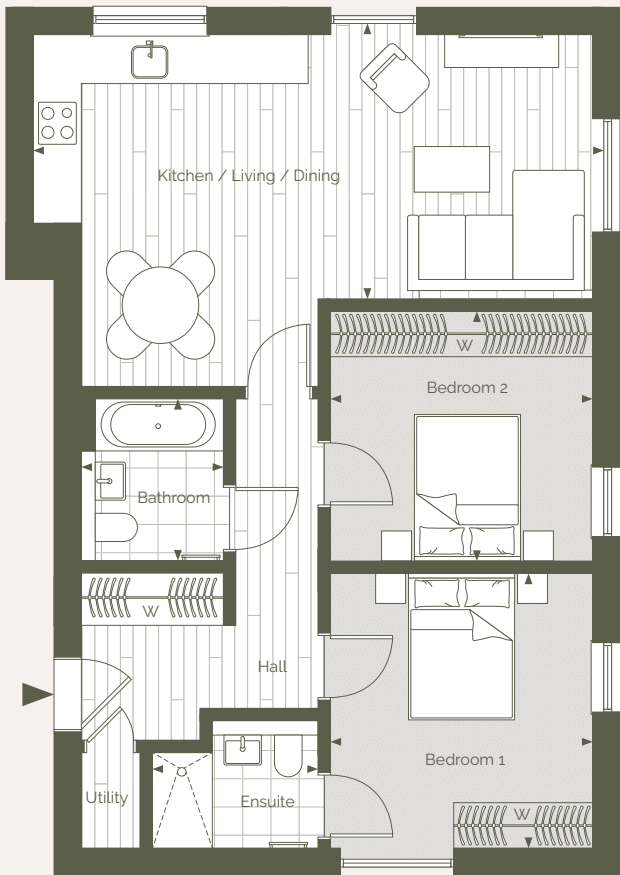
Ground Floor



Block B
Apartment 27

Two Bedrooms
First Floor

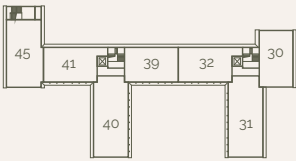
Total Area: 73.6 sq m 792 sq ft



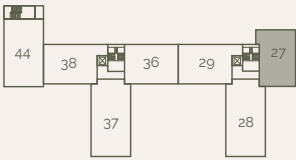
Room Dimensions		
Kitchen / Living / Dining	7.60m x 3.60m	24' 11" x 11' 10"
Bedroom 1	3.50m x 3.60m	11' 6" x 11' 10"
Bedroom 2	3.50m x 3.30m	11' 6" x 10' 10"
Bathroom	1.90m x 2.20m	6' 3" x 7' 3"

Block B Key Plans

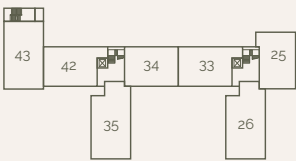
Second Floor



First Floor



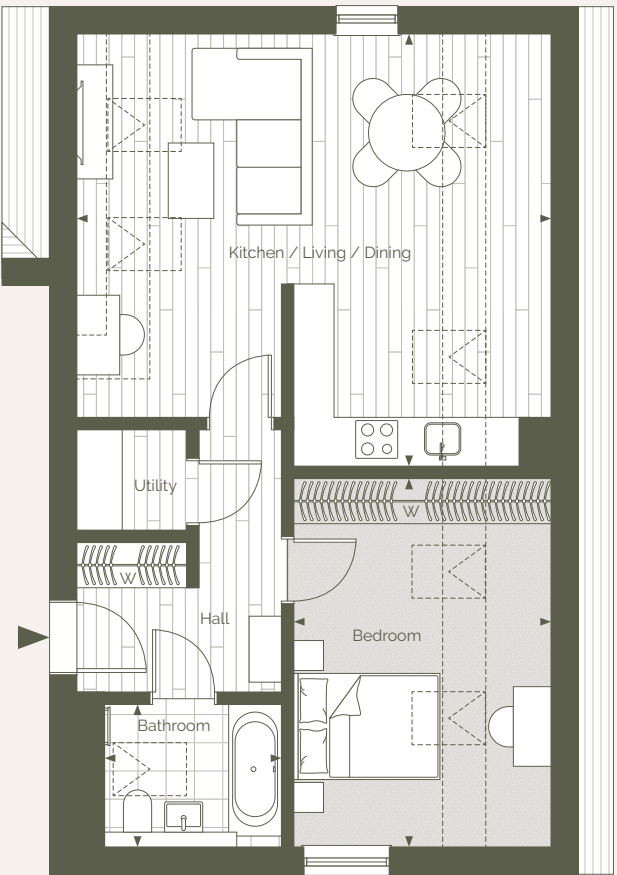
Ground Floor



Block B
Apartment 30

One Bedroom
Second Floor

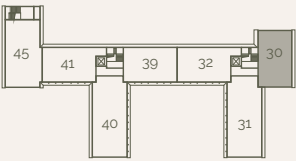
Total Area: 57.7 sq m 621 sq ft



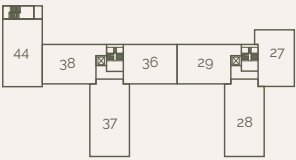
Room Dimensions		
Kitchen / Living / Dining	6.29m x 5.87m	20' 8" x 19' 3"
Bedroom	3.28m x 4.93m	10' 9" x 16' 2"
Bathroom	2.78m x 1.95m	9' 1" x 6' 5"

Block B Key Plans

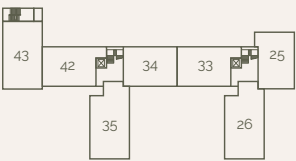
Second Floor



First Floor



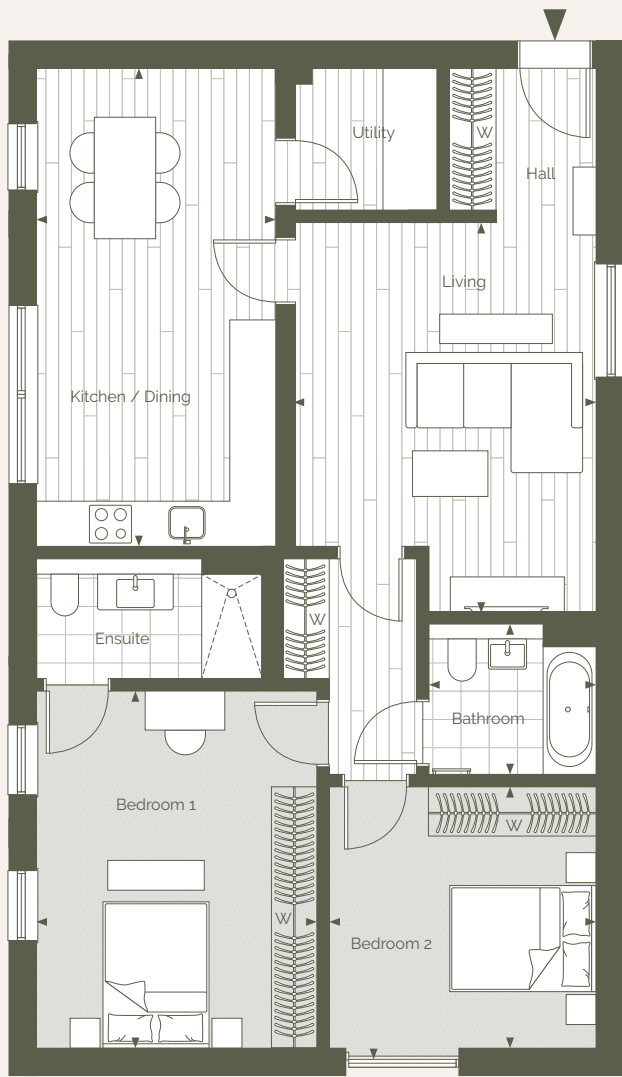
Ground Floor



Block B
Apartment 43

Two Bedrooms
Ground Floor

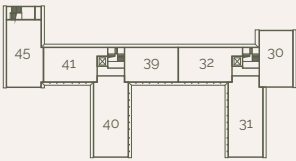
Total Area: 94.1 sq m 1,013 sq ft



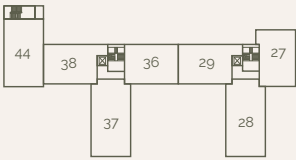
Room Dimensions		
Kitchen / Dining	3.18m x 6.32m	10' 5" x 20' 9"
Living	3.99m x 5.21m	13' 1" x 17' 1"
Bedroom 1	3.67m x 4.73m	12' 0" x 15' 6"
Bedroom 2	3.49m x 3.44m	11' 5" x 11' 3"
Bathroom	2.35m x 2.10m	7' 9" x 6' 11"

Block B Key Plans

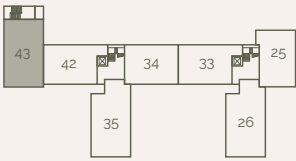
Second Floor



First Floor



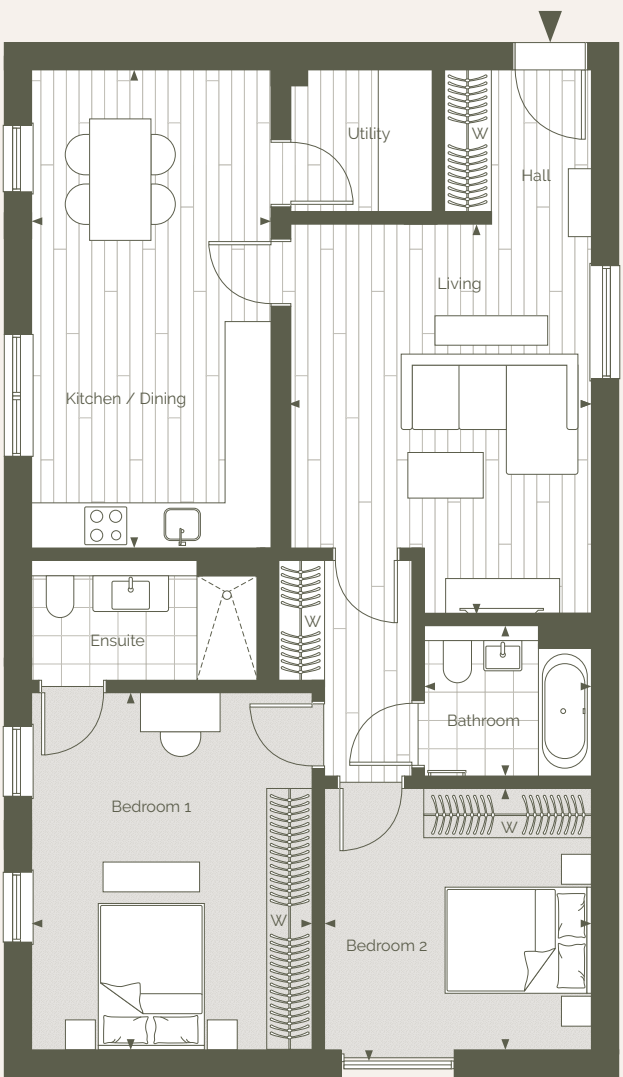
Ground Floor



Block B
Apartment 44

Two Bedrooms
First Floor

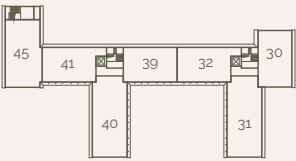
Total Area: 94.1 sq m 1,013 sq ft



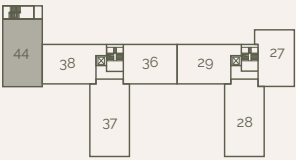
Room Dimensions		
Kitchen / Dining	3.18m x 6.32m	10' 5" x 20' 9"
Living	3.99m x 5.21m	13' 1" x 17' 1"
Bedroom 1	3.67m x 4.73m	12' 0" x 15' 6"
Bedroom 2	3.49m x 3.44m	11' 5" x 11' 3"
Bathroom	2.35m x 2.10m	7' 9" x 6' 11"

Block B Key Plans

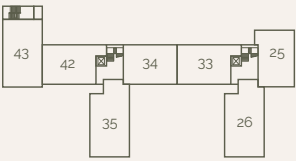
Second Floor



First Floor



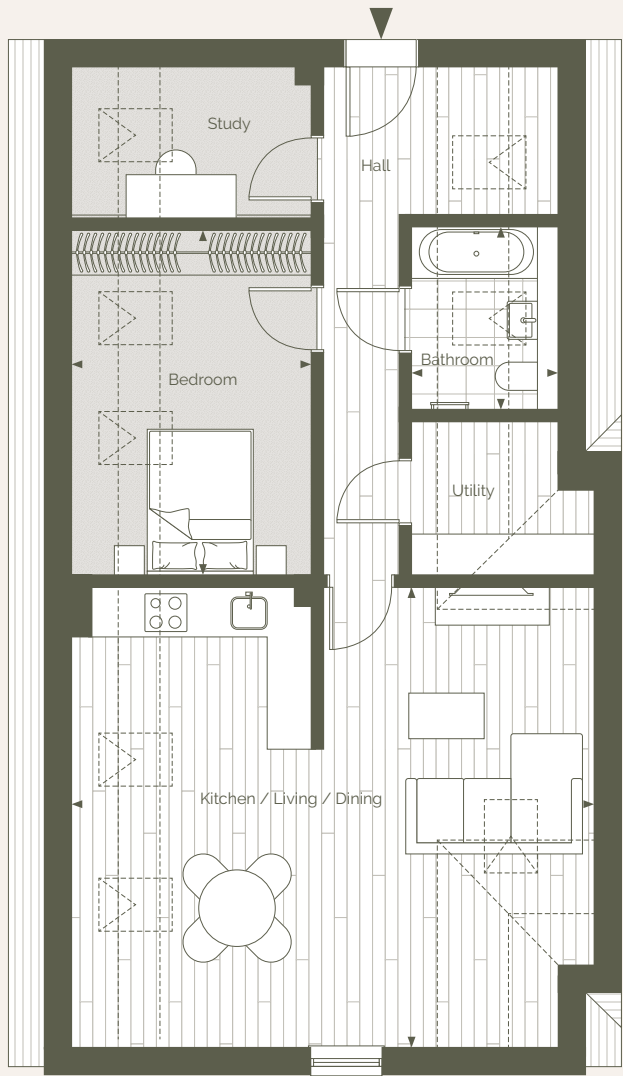
Ground Floor



Block B
Apartment 45

One Bedroom
Second Floor

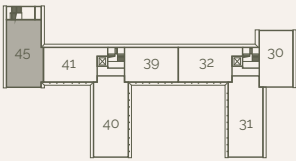
Total Area: 71.6 sq m 771 sq ft



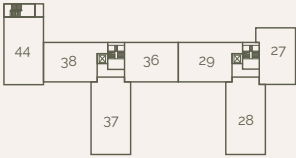
Room Dimensions		
Kitchen / Living / Dining	6.34m x 6.06m	20' 10" x 19' 11"
Bedroom	3.18m x 4.63m	10' 5" x 15' 2"
Bathroom	1.94m x 2.47m	6' 4" x 8' 1"

Block B Key Plans

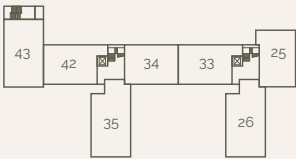
Second Floor



First Floor



Ground Floor





Take life in your stride



A Development by Coronado Property Developments and
Proseed Property with interior design by Coronado Interiors.



coronado.co.uk



proseedproperty.co.uk



Contact

01372 743033
homes@cairds.co.uk
www.cairds.co.uk



01483 796810
guildfordnewhomes@savills.com
www.savills.co.uk

Disclaimer: While reasonable effort has been made to ensure the accuracy of this document and the information contained within, this cannot be guaranteed and no representation or warranty is made in that regard and all such representations and warranties (whether express, implied or otherwise) are excluded to the extent permitted by law. The specification included herein is the anticipated specification as at the date of this brochure being produced and is designed specifically as a guide and we reserve the right to amend the specification where necessary or desirable and without notice. Computer generated images are indicative of the quality and style of the development and are not intended to represent fully accurate depictions. Apartment and amenity designs, sizes, layouts and other details are indicative only and may be subject to change. Any areas, measurements or distances shown in any text or plan are indicative and for information purposes only and may be different once actually constructed. Any reference to use of the property does not mean that any necessary planning, building regulations or other consent has been obtained. Variances occur between apartment types. Please refer to the sales team for details of a particular apartment. Please note that the design of this development is ongoing and certain items of the specification may be amended to an item of equivalent quality without notice. Plans are not to scale. All measurements are approximate. All furniture and planting is shown for context only, not supplied with the apartment. Prices are subject to change without notice. Branding & Marketing by Shaka Studio. 